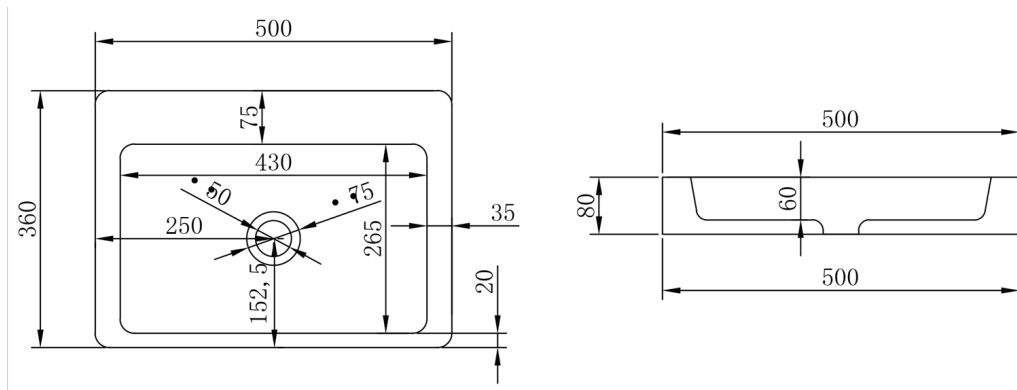


**SPECIFICATION SHEET**

**LUCA Composite Stone Basin 500mm**  
SKU: CSB-LUCA A20



<b>Material</b>	Composite Stone
<b>Installation</b>	Bench Mount
<b>Width</b>	500mm
<b>Depth</b>	360mm
<b>Height</b>	80mm
<b>Waste Size</b>	40mm
<b>Overflow</b>	No
<b>Colour Options</b>	White
<b>Finish Options</b>	Matte



Luxurious, Smooth and Velvety to Touch



Stain, Mould and Bacteria Resistant



Highly Durable



7 Year Warranty

