

SENSOR TOUCH PULL-OUT KITCHEN FAUCET User Manual

Please read the manual carefully before using the product

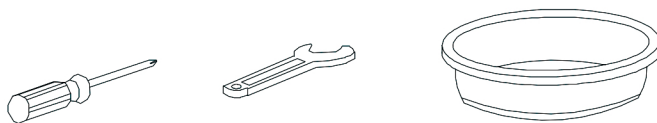
System Parameter

Control time	<0.5s	Power supply	New energy resources batteries
Switching time	<0.5s		
Waterproof level	IPX5	Watertem perature	1°C-75°C
Resistant intensity	6bar	Watertem perature pressure	0.2bar

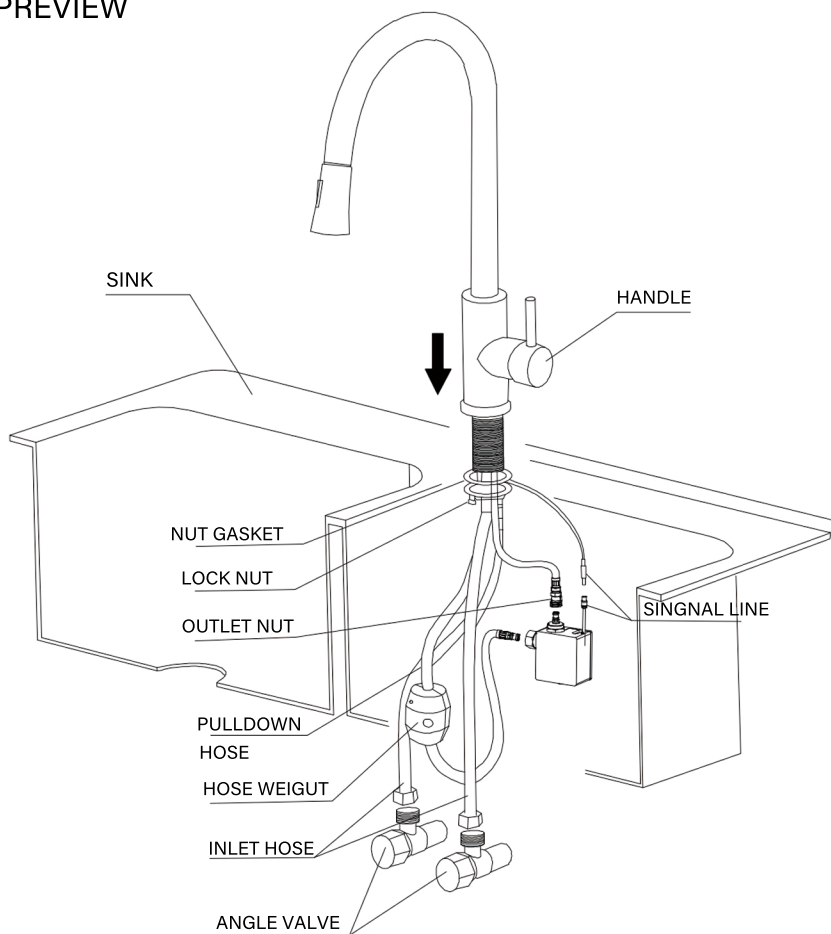
Installation Condition

1. Please check spare parts list at once when the package opened to avoid any spare part lack or breakage.
2. Do not disassemble the faucet as functional test has been done in the factory.
3. Please check and make sure there is no blockage in the hose before installation.
4. Please check if any leakage after installation.
5. The maximum water temperature should not exceed 90 degrees.
6. $0.2\text{Mpa} < \text{water pressure} < 1.0\text{Mpa}$

TOOLS

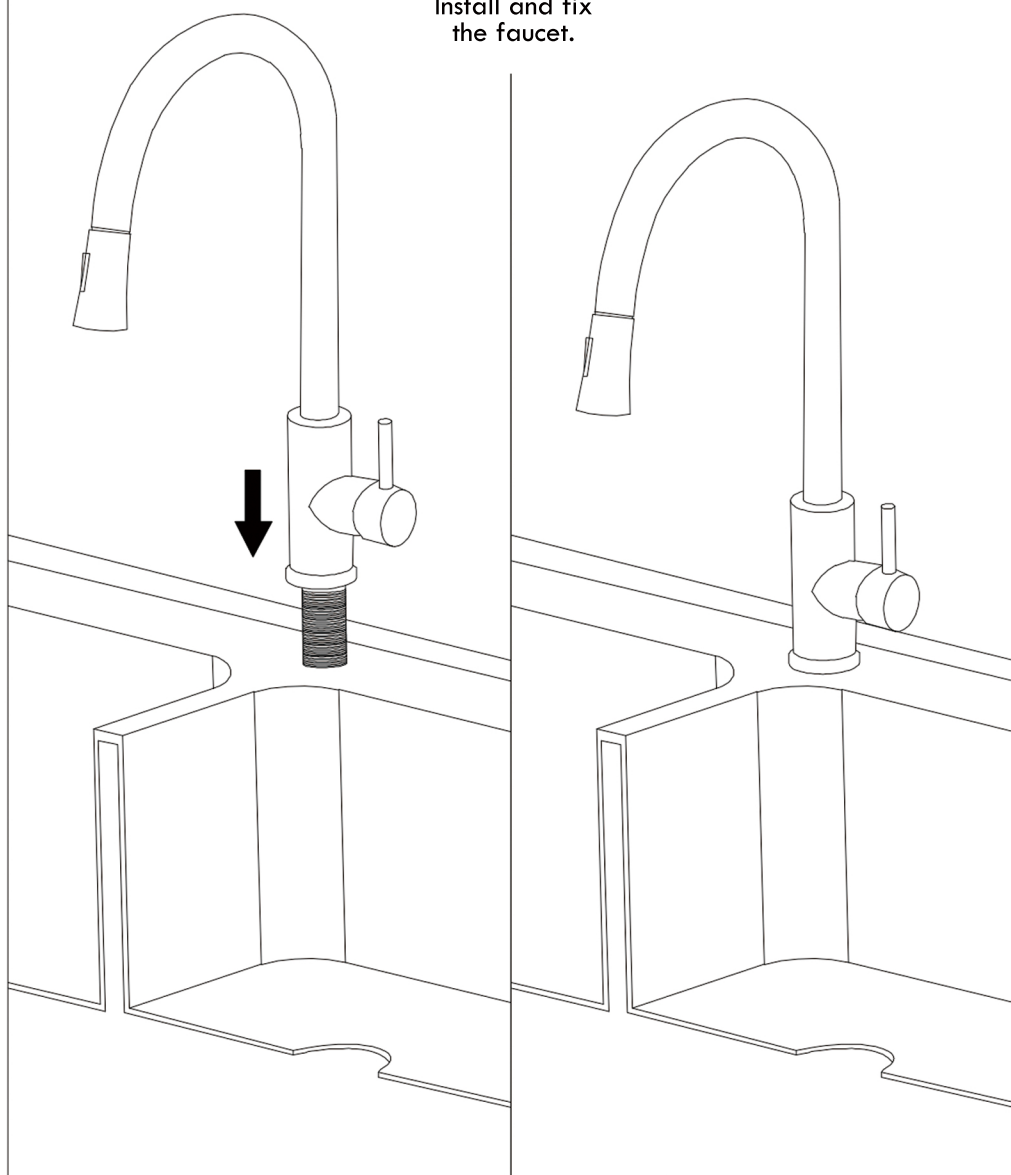


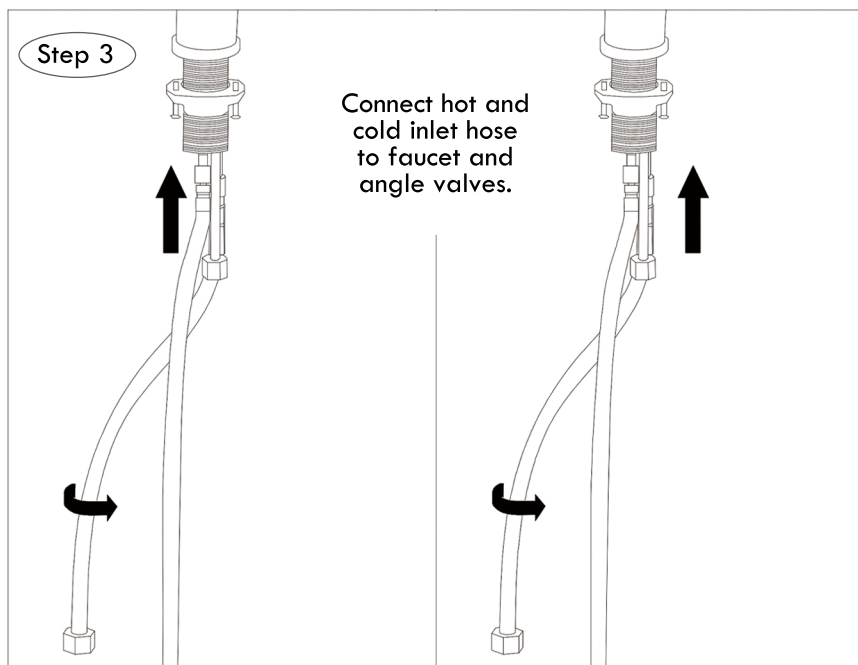
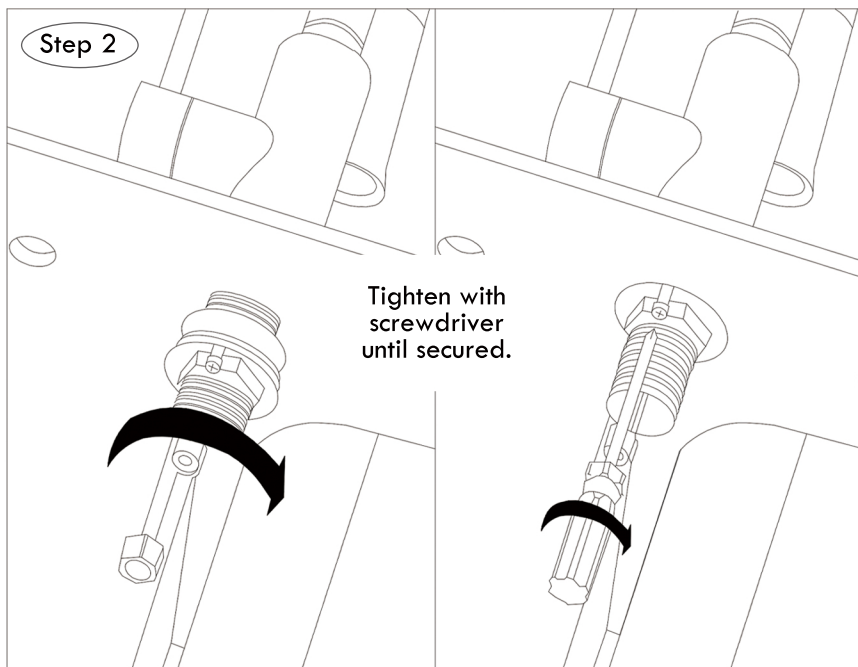
PREVIEW



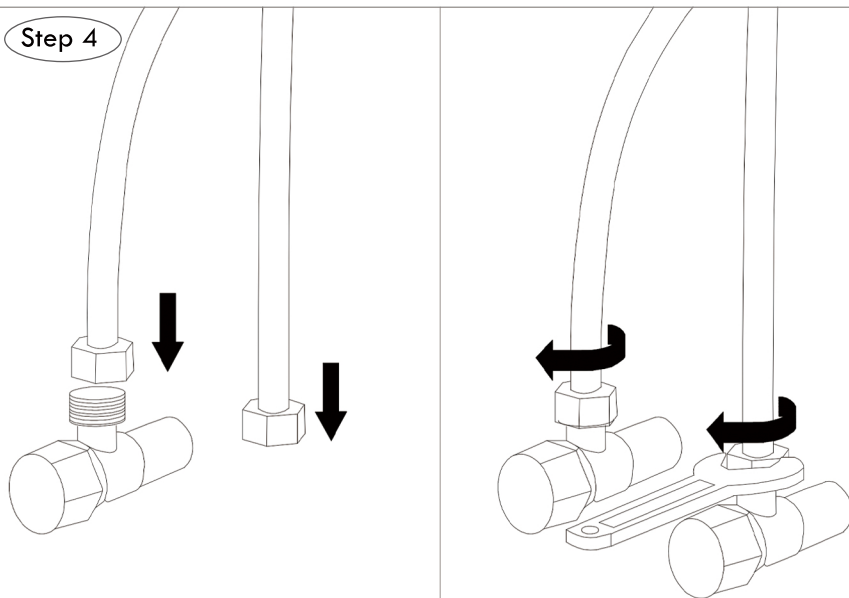
Step 1

Install and fix
the faucet.



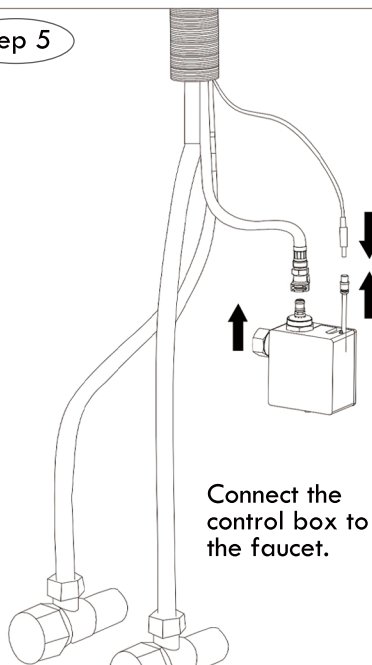


Step 4



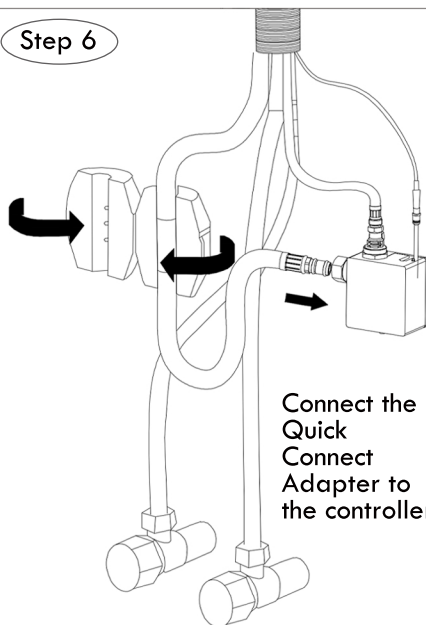
Tighten with spanner until secured.

Step 5



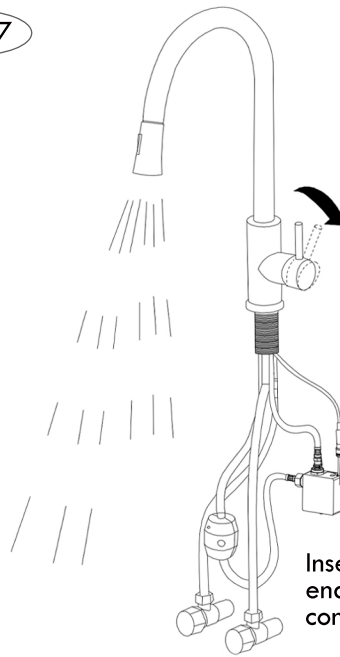
Connect the control box to the faucet.

Step 6



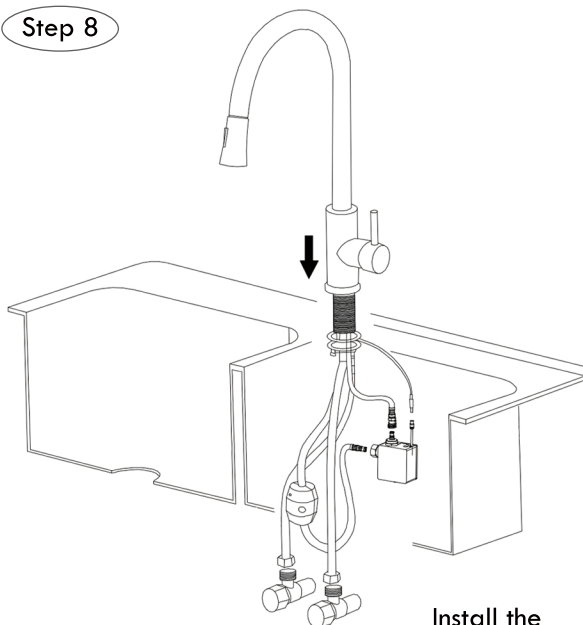
Connect the Quick Connect Adapter to the controller.

Step 7



Insert hose into
end of Quick
connect adapter.

Step 8



Install the
gravity ball.