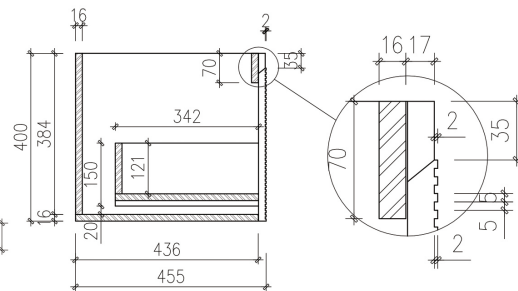
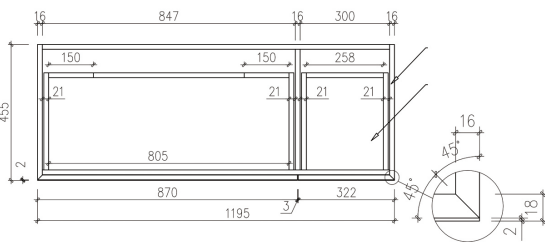
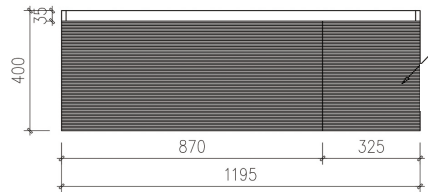
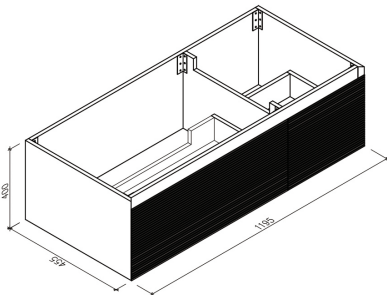


**ARUVO™ BECA COLLECTION 1200**

SKU: VTK1200

<b>Configuration</b>	1 Large & 1 Small Drawer
<b>Installation</b>	Wall Hung
<b>Width</b>	1195mm
<b>Depth</b>	455mm
<b>Height</b>	400mm
<b>Colour Options</b>	Matte Black & Oak (Horizontal Grooves) <b>BO</b> Ecu (Vertical Grooves) <b>EC</b> Powder White (Vertical Grooves) <b>MW</b>
<b>Basin Options</b>	Poly-marble Drop-in Basin <b>NPMB</b> Wave Composite Stone Drop-in Basin (Centered/Offset Left Waste) <b>CSDB-WAVE</b> Hermis Composite Stone Drop-in Basin (Centered/Offset Left Waste) <b>CSDB-HERMIS</b> Arc Composite Stone Drop-in Basin <b>CSDB-ARC</b> Composite Stone Benchtop <b>CSBT</b>



Soft Close Drawers with Unihopper Premium Rails

**10**

10 Year Warranty for Cabinetry



Plywood with North American Timber Veneer

**5**

5 Year Warranty for Basin/Benchtop



High Moisture Resistant Ply

