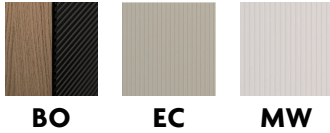




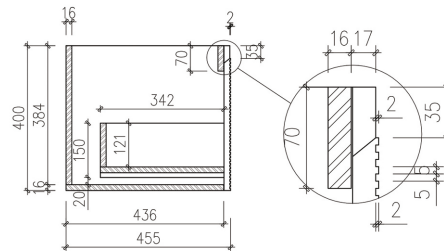
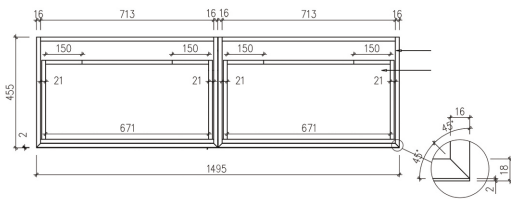
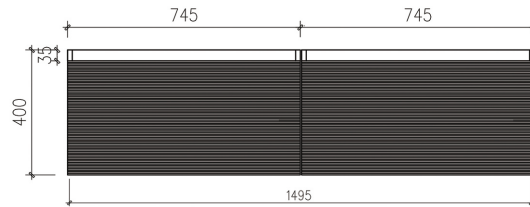
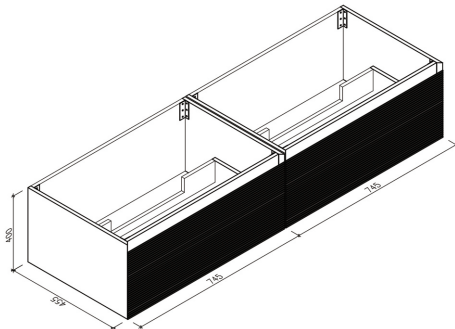
**ARUVO™ BECA COLLECTION 1500**

SKU: VTK1500



**Configuration** 2 Large Drawer  
**Installation** Wall Hung  
**Width** 1495mm  
**Depth** 455mm  
**Height** 400mm  
**Colour Options** Matte Black & Oak (Horizontal Grooves) **BO**  
Ecrú (Vertical Grooves) **EC**  
Powder White (Vertical Grooves) **MW**

**Basin Options** Poly-marble Drop-in Basin **NPMB**  
Wave Composite Stone Drop-in Basin **CSDB-WAVE**  
Hermis Composite Stone Drop-in Basin **CSDB-HERMIS**  
Arc Composite Stone Drop-in Basin **CSDB-ARC**  
Composite Stone Benchtop **CSBT**



Soft Close Drawers with Unihopper Premium Rails



10 Year Warranty for Cabinetry



Plywood with North American Timber Veneer



5 Year Warranty for Basin/Benchtop



High Moisture Resistant Ply

