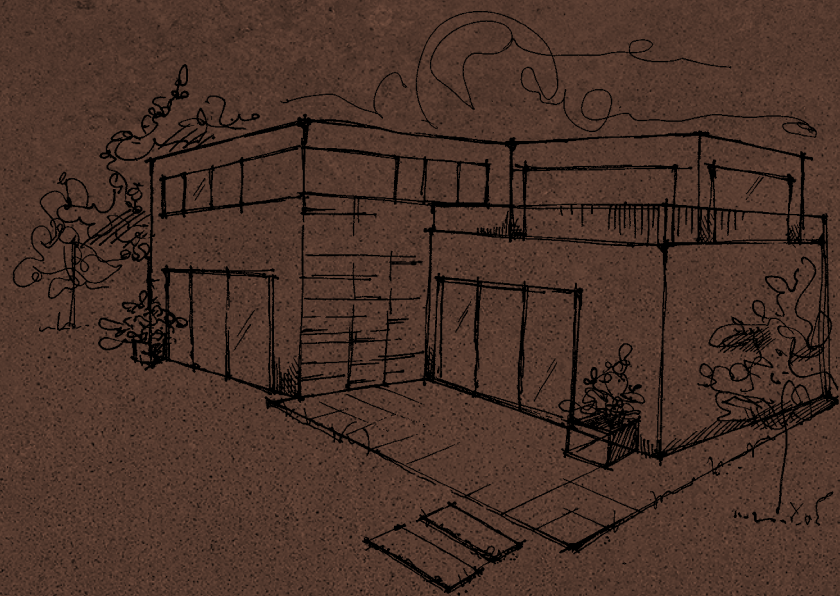


INTERNO

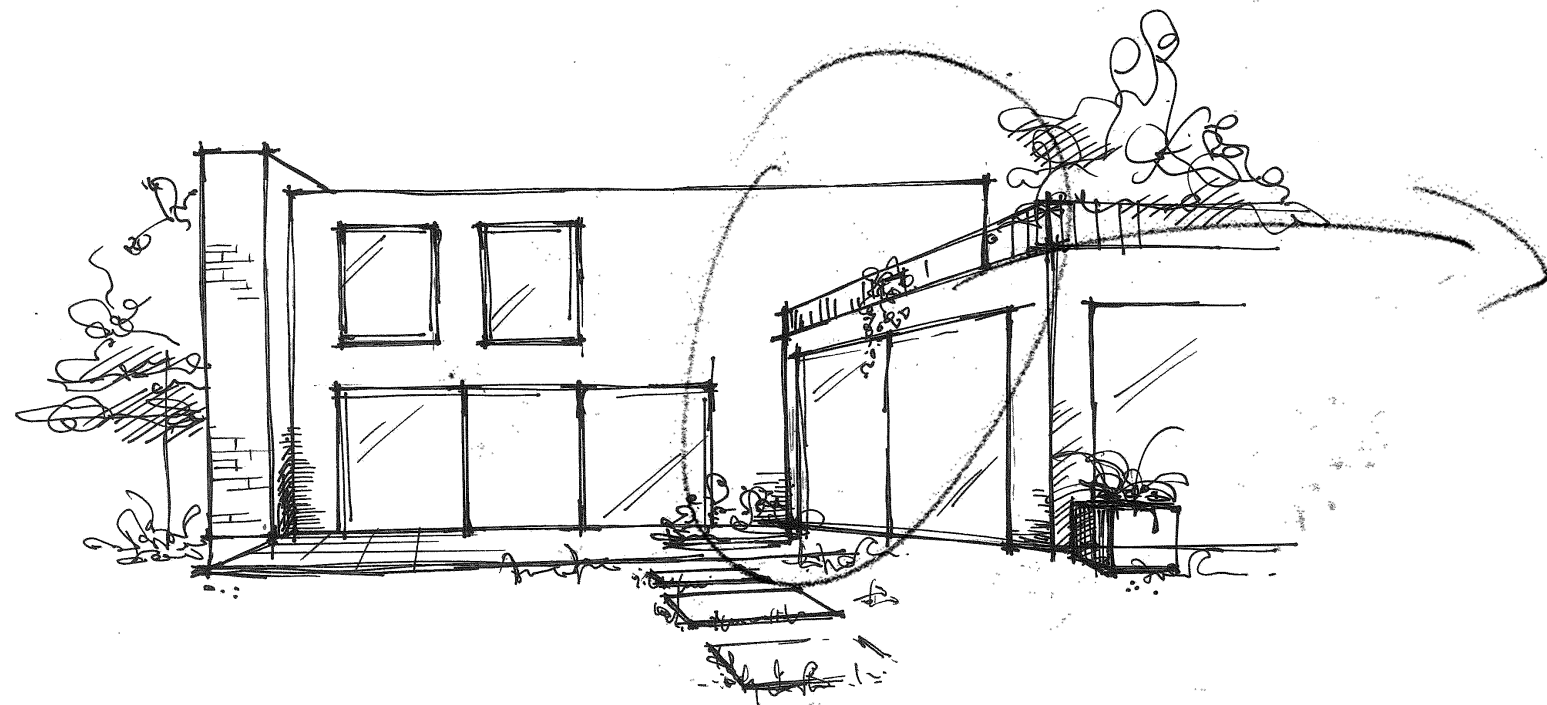
9





# INTERNO 9





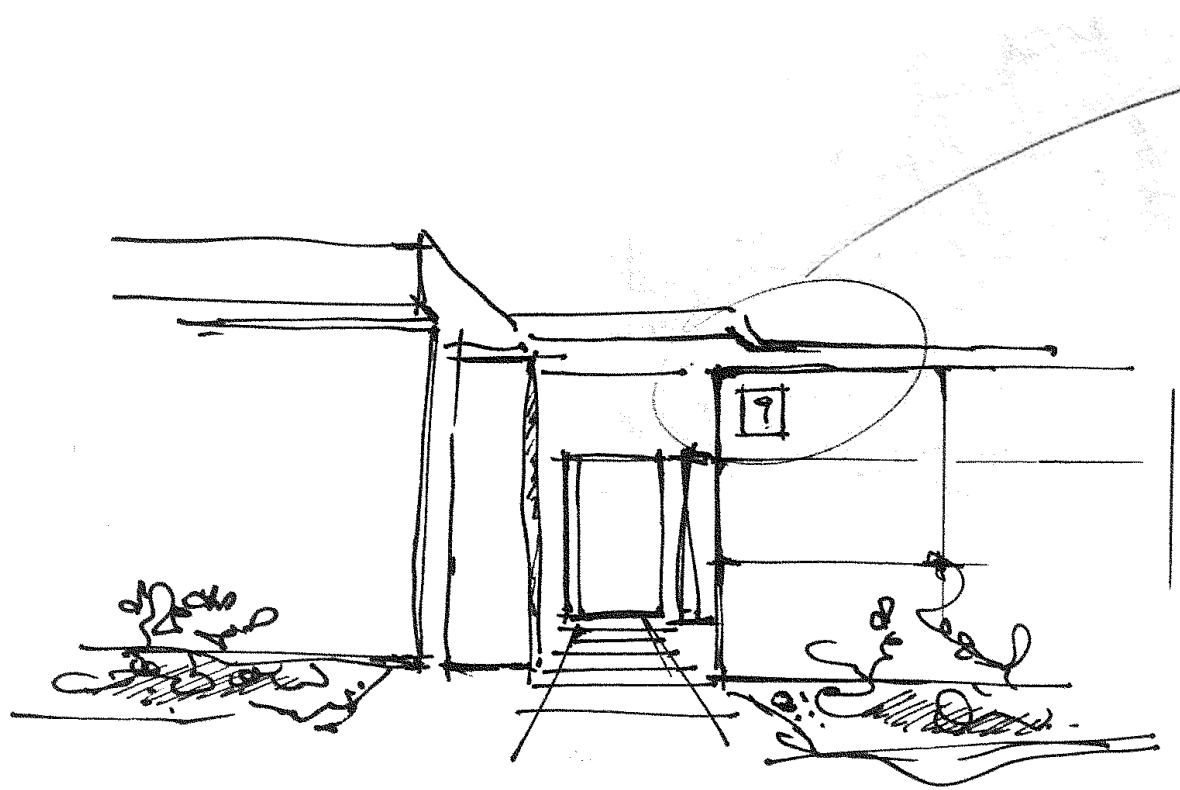
## INTERNO 9

Immagina un complesso residenziale con uno stile moderno, minimalista, dove lo sguardo incontra strutture lineari, armonie di volumi, contrasti materici. L'eleganza della semplicità si amalgama all'irriverenza indomita del metallo che, con affascinante rudezza, si fa protagonista del paesaggio.

Imagine a contemporary residential complex with a minimalist feel, where the viewer's gaze is drawn to linear structures, harmonious forms, and contrasting textures. Stylish simplicity is paired with the untamed irreverence of weathering steel, which - with a stunning coarseness - becomes a key feature of the landscape.

Esterno Complesso residenziale:  
lastre effetto corten in  
parete, porta pulita  
Targhetta dei numeri interni  
da realizzare a rilievo in ferro  
scelta verde sempreverdi  
con forme pulite

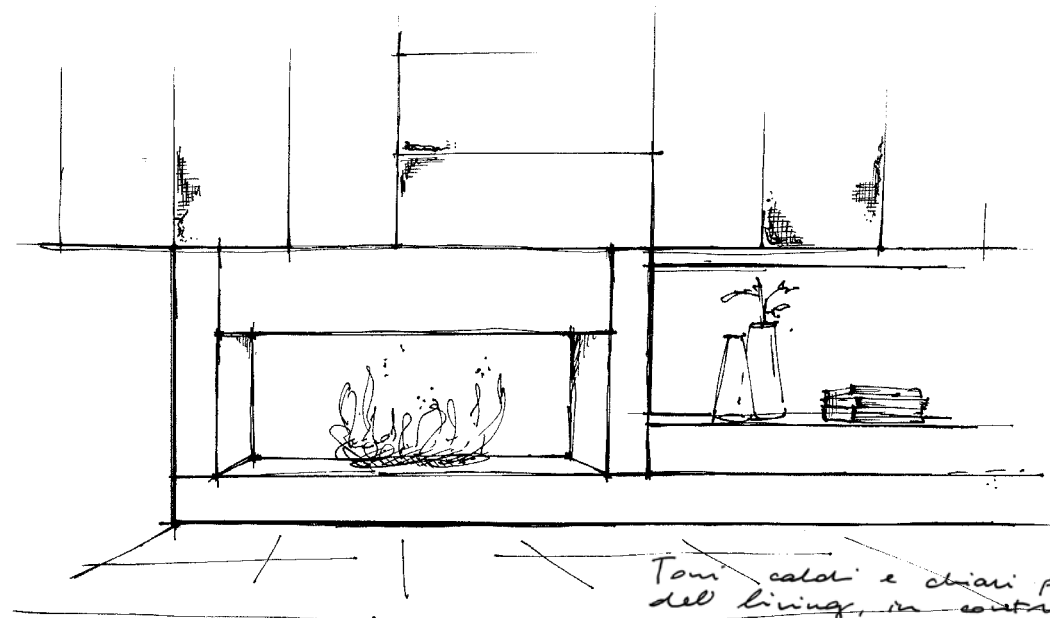
Exterior, residential complex:  
weathering steel effect planks  
on walls, minimalist feel  
Plates showing apartment numbers  
to be made in iron with  
embossed design.  
Greenery: evergreens with clean lines











Toni caldi e chiari per il pavimento  
del living, in contrasto con gli  
arredi scuri e la struttura camino  
Prevedere base in marmo per  
il camino

Warm, pale tones for the living room floor  
provide a stylish contrast with the dark  
furnishing and the fireplace feature  
Include marble hearth

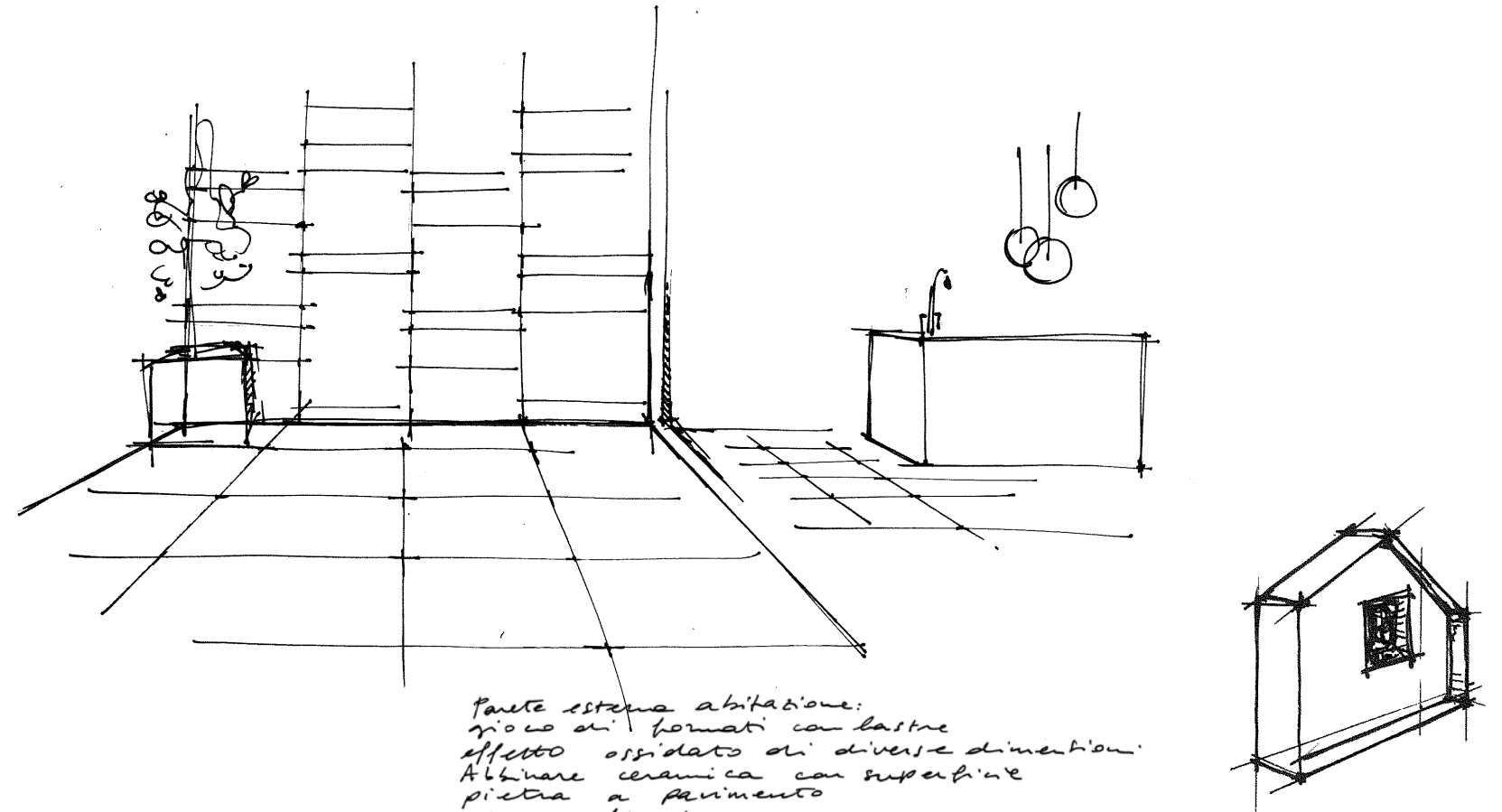






Outdoor: Rust 60x120 - Rust Mix Sizes 60x120 - Unika Grey Bocc. 60x60  
Indoor: Mosaico Losanga Rust 30x60 - Rust Lapp. 60x120 / 60x60





parete esterna abitazione:  
gioco di formati con lastre  
effetto ossidato di diverse dimensioni.  
Abbinare ceramica con superficie  
pietra a pavimento  
Pianta fiorita in vaso

External walls, home: design featuring  
a combination of different-sized  
rust-effect slabs  
Team ceramic slabs with stone paving  
Flowering plant in pot





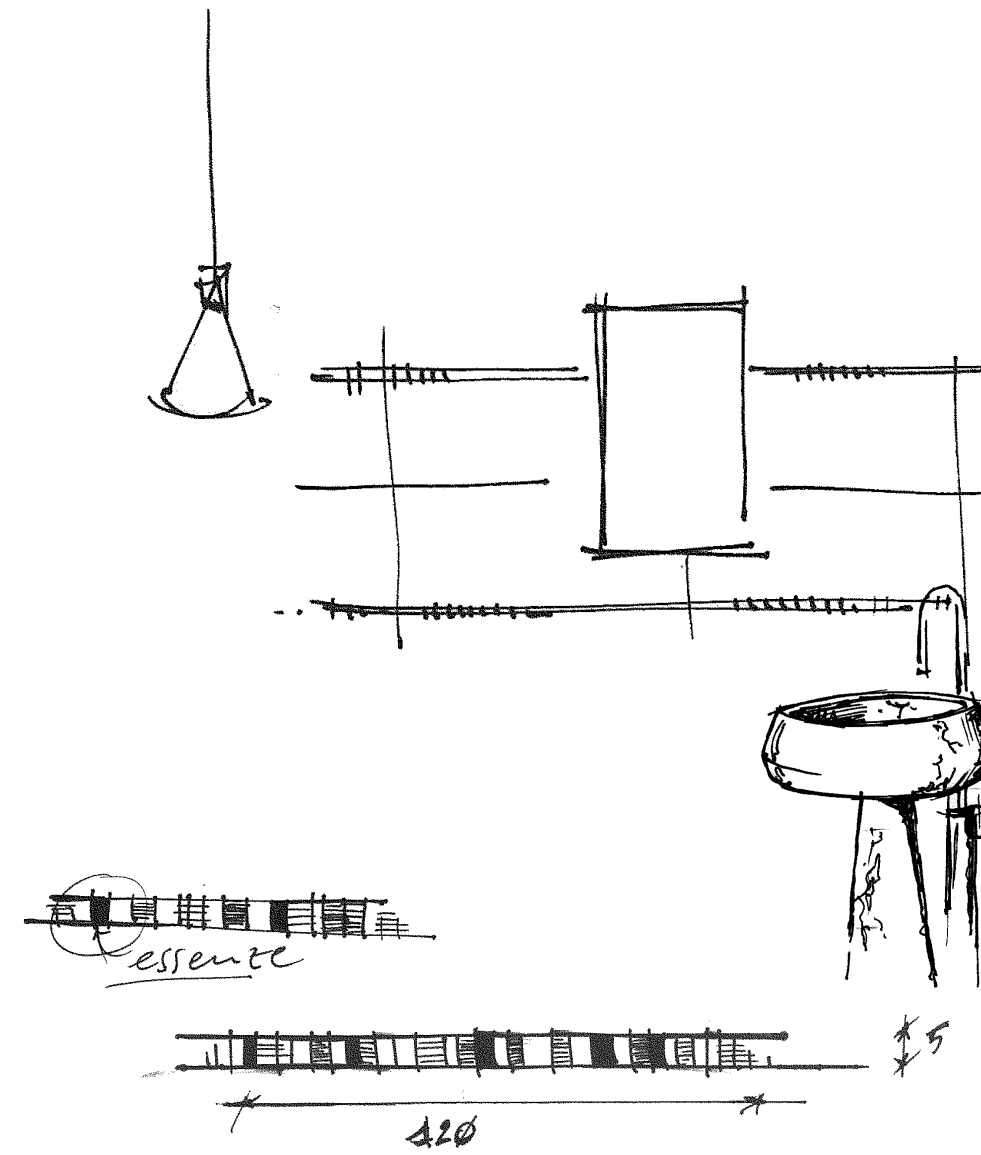




1

Pearl 30x120 / 60x120 - Dolphin Grey 20x120 - Fascia Essenze 5x30 - Silver 60x60





Mixare legno a materiali ceramici chiari  
Abbinare sanitari con linee morbide  
in marmo scuro  
Miscelatori in ottone

Team wood with pale ceramic tiling  
Combine with dark marble bathroom  
furnishings with soft lines  
Brass mixer taps



Pearl 60x120

Silver 60x60

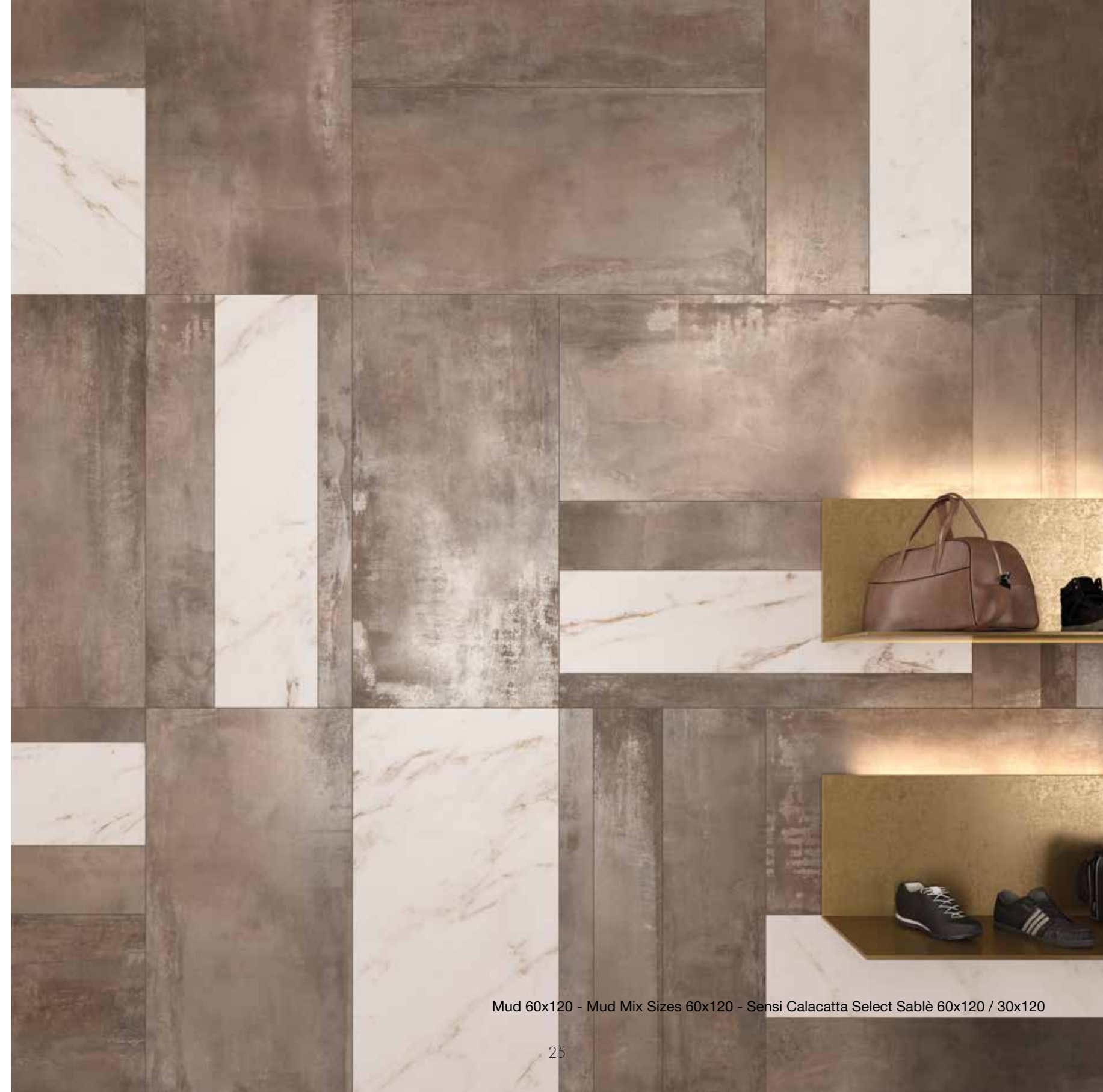
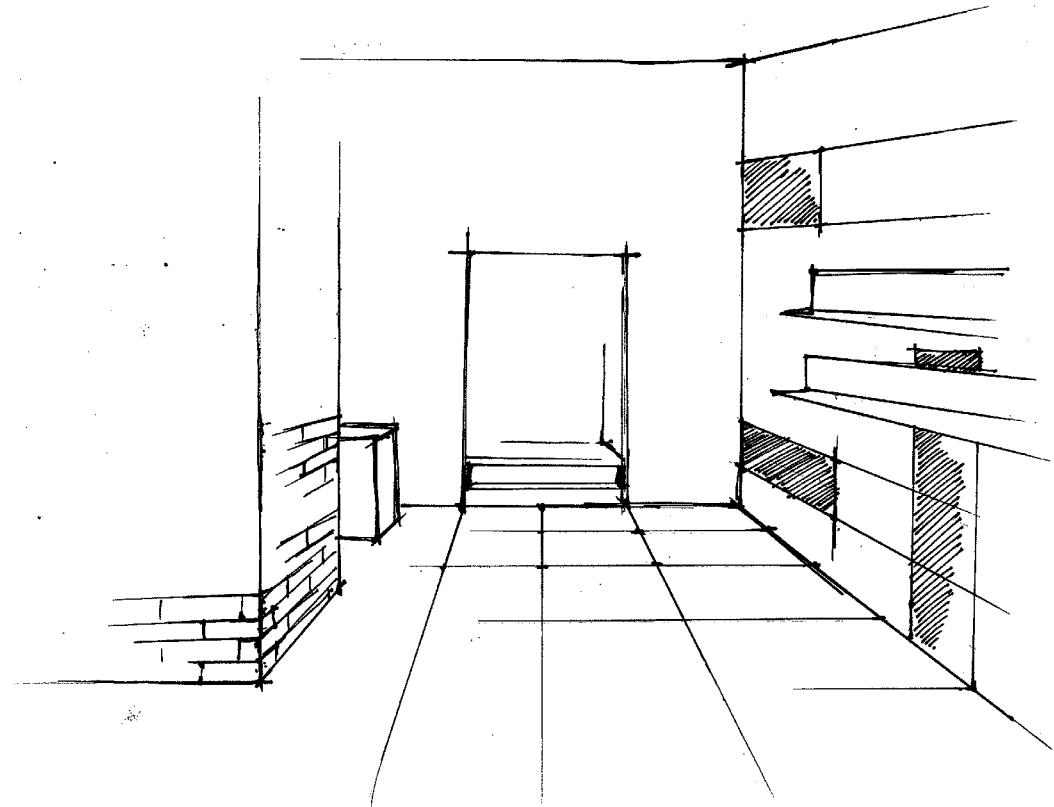






Per showroom, al 1° piano utilizzare lastre  
effetto cotto nero a pavimento e parete  
muretto 3D  
Parete espositiva: posa multiformato  
d'effetto con stesse lastre in colorazioni più calde  
Posa marmo ceramico nella parte scale  
e nella parete espositiva  
Mensole ad L in metallo color ottone  
retroilluminate

For the showroom, on the first floor,  
use black weathering steel-effect slabs on the floor  
and 3D dwarf wall effect on the walls  
Display wall: high-impact multi-size  
design with the same slabs in warmer tones  
Fit ceramic marble tiles on the walls of the  
stairway and on the display wall  
Brass-coloured metal L-shaped shelves  
with backlighting







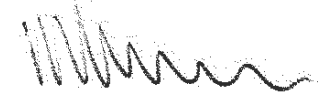






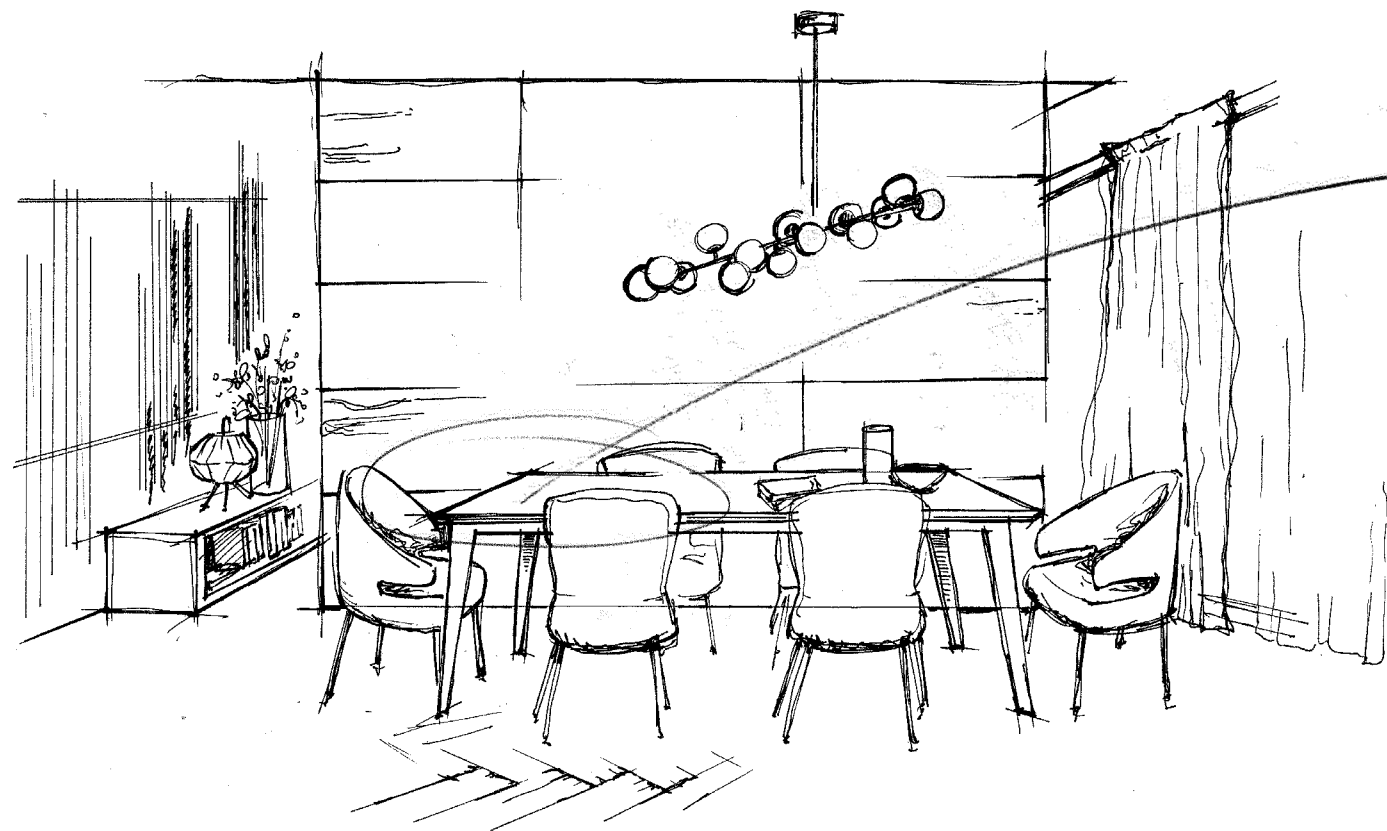






Gusto elegante; pavimento perlato posato a  
stria di perle + parete d'impatto con lastre effetto marmo  
(cercare grafica importante)  
Tocco di colore nelle sedute

Stylish elegance; pearl-effect floor slabs laid  
in herringbone design + high-impact wall  
with marble effect slabs  
(find graphics with high visual impact)  
A hint of colour in the seating

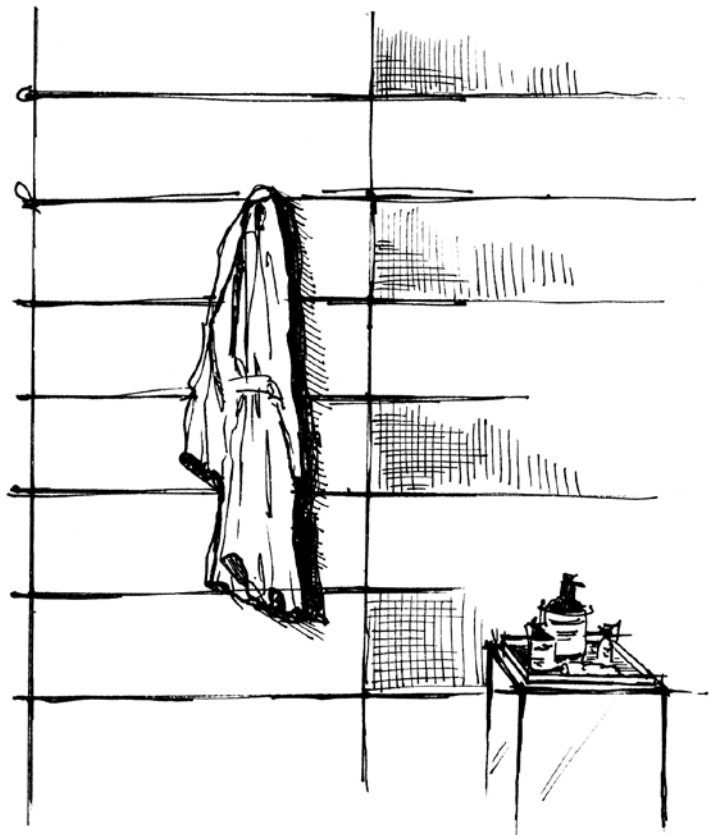






Indoor: Pearl 30x120 - Sensi Arabesque Silver Lux+ 60x120  
Outdoor: Dolphin Grey Aged 20x120





Bagno ospiti: inserire in parete listoni ceramici  
effetto metallo - tonalità di grigio  
cercare decorazione con materie  
metallizzate preziose

Guest bath room: add metal-effect ceramic  
strip tiles in shades of grey to wall  
Find decorations made of materials with  
a precious metal finish



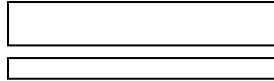




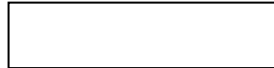




60x120 2  
 INTERNO 9 PEARL  
**19R34050** rett. F 68,90  
**19L34050** lapp rett. F 81,90



60x120 2  
 INTERNO 9 PEARL  
**19R34060** mix sizes rett. F 88,90  
 Pcs/box: 30x120 2  
 20x120 2  
 10x120 2



30x120 4  
 INTERNO 9 PEARL  
**19R57050** rett. F 68,90  
**19L57050** lapp. rett. F 81,90



60x60 3  
 INTERNO 9 PEARL  
**19R01050** rett. F 53,90  
**19L01050** lapp. rett. F ????



30x60 6  
 INTERNO 9 PEARL  
**19R03050** rett. F 49,90



30x60 4  
 MOS. LOSANGA PEARL  
**19R03051** rett. F ????



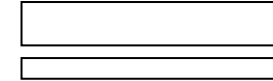
30x30 6  
 MOS. QUADRETTI PEARL  
**19R09051** rett. F 101,90

# INTERNO 9

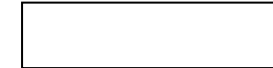
PEARL



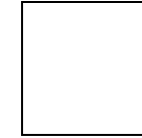
60x120 2  
 INTERNO 9 DUNE  
**19R34100** rett. F 68,90  
**19L34100** lapp rett. F 81,90



60x120 2  
 INTERNO 9 DUNE  
**19R34110** mix sizes rett. F 88,90  
 Pcs/box: 30x120 2  
 20x120 2  
 10x120 2



30x120 4  
 INTERNO 9 DUNE  
**19R57100** rett. F 68,90  
**19L57100** lapp. rett. F 81,90



60x60 3  
 INTERNO 9 DUNE  
**19R01100** rett. F 53,90  
**19L01100** lapp. rett. F ????



30x60 6  
 INTERNO 9 DUNE  
**19R03100** rett. F 49,90



30x60 4  
 MOS. LOSANGA DUNE  
**19R03101** rett. F ????




30x30 6  
 MOS. QUADRETTI DUNE  
**19R09101** rett. F 101,90

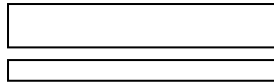
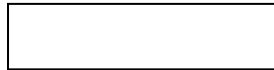
# INTERNO 9




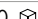
DUNE

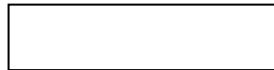





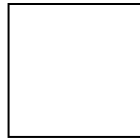
60x120  2  
 INTERNO 9 SILVER  
**I9R34150** rett. F 68,90  
**I9L34150** lapp rett. F 81,90




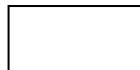
60x120  2  
 INTERNO 9 SILVER  
**I9R34160** mix sizes rett. F 88,90  
 Pcs/box: 30x120  2  
 20x120  2  
 10x120  2




30x120  4  
 INTERNO 9 SILVER  
**I9R57150** rett. F 68,90  
**I9L57150** lapp. rett. F 81,90



60x60  3  
 INTERNO 9 SILVER  
**I9R01150** rett. F 53,90  
**I9L01150** lapp. rett. F ????




30x60  6  
 INTERNO 9 SILVER  
**I9R03150** rett. F 49,90



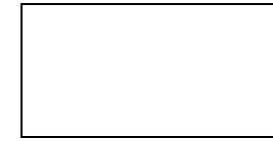
30x60  4  
 MOS. LOSANGA SILVER  
**I9R03151** rett. F ????



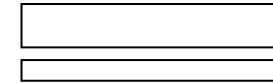
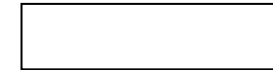
30x30  6  
 MOS. QUADRETTI SILVER  
**I9R09151** rett. F 101,90

# INTERNO 9

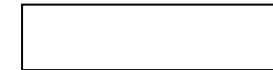
SILVER



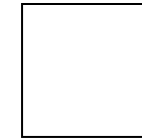
60x120  2  
 INTERNO 9 DARK  
**I9R34200** rett. F 68,90  
**I9L34200** lapp rett. F 81,90



60x120  2  
 INTERNO 9 DARK  
**I9R34210** mix sizes rett. F 88,90  
 Pcs/box: 30x120  2  
 20x120  2  
 10x120  2



30x120  4  
 INTERNO 9 DARK  
**I9R57200** rett. F 68,90  
**I9L57200** lapp. rett. F 81,90



60x60  3  
 INTERNO 9 DARK  
**I9R01200** rett. F 53,90  
**I9L01200** lapp. rett. F ????



30x60  6  
 INTERNO 9 DARK  
**I9R03200** rett. F 49,90



30x60  4  
 MOS. LOSANGA DARK  
**I9R03201** rett. F ????



30x30  6  
 MOS. QUADRETTI DARK  
**I9R09201** rett. F 101,90

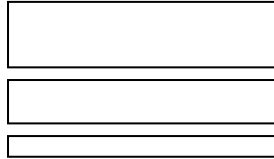
# INTERNO 9

DARK

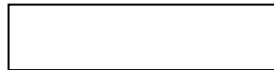




60x120 2  
 INTERNO 9 MUD  
**19R34250** rett. F 68,90  
**19L34250** lapp rett. F 81,90



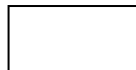
60x120 2  
 INTERNO 9 MUD  
**19R34260** mix sizes rett. F 88,90  
 Pcs/box: 30x120 2  
 20x120 2  
 10x120 2



30x120 4  
 INTERNO 9 MUD  
**19R57250** rett. F 68,90  
**19L57250** lapp. rett. F 81,90



60x60 3  
 INTERNO 9 MUD  
**19R01250** rett. F 53,90  
**19L01250** lapp. rett. F ????



30x60 6  
 INTERNO 9 MUD  
**19R03250** rett. F 49,90



30x60 4  
 MOS. LOSANGA MUD  
**19R03251** rett. F ????



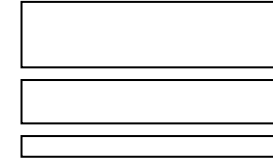
30x30 6  
 MOS. QUADRETTI MUD  
**19R09251** rett. F 101,90

# INTERNO 9

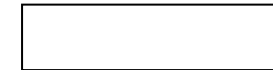
MUD



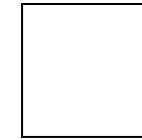
60x120 2  
 INTERNO 9 RUST  
**19R34300** rett. F 68,90  
**19L34300** lapp rett. F 81,90



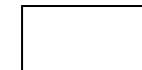
60x120 2  
 INTERNO 9 RUST  
**19R34310** mix sizes rett. F 88,90  
 Pcs/box: 30x120 2  
 20x120 2  
 10x120 2



30x120 4  
 INTERNO 9 RUST  
**19R57300** rett. F 68,90  
**19L57300** lapp. rett. F 81,90



60x60 3  
 INTERNO 9 RUST  
**19R01300** rett. F 53,90  
**19L01300** lapp. rett. F ????



30x60 6  
 INTERNO 9 RUST  
**19R03300** rett. F 49,90



30x60 4  
 MOS. LOSANGA RUST  
**19R03301** rett. F ????




30x30 6  
 MOS. QUADRETTI RUST  
**19R09301** rett. F 101,90

# INTERNO 9


RUST





60x60  3  
DUO INTERNO 9 COLD  
**I9R01160** rett. F ????



60x60  3  
DUO INTERNO 9 HOT  
**I9R01260** rett. F ????




30x120  2  
FASCIA RAKU DARK MIX 2  
**I9R57051** PZ ????



30x120  2  
FASCIA RAKU LIGHT MIX 2  
**I9R57052** PZ ????



5x30  4  
\*FASCIA ESSENZE MIX  
**I9R03051** PZ ????



19,5x8,5  4  
LOSANGA RAKU MIX  
**I9R03052** PZ ????



4x30  4  
FASCIA ARDESIA GRIGIO  
**RER09204** rett. PZ 20,90  
(Pietra naturale - Natural stone)



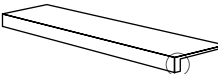



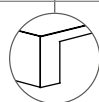
4x30  4  
FASCIA ARDESIA BRONZO  
**RER09054** rett. PZ 20,90  
(Pietra naturale - Natural stone)

\* Decorazione realizzata in legno trattato e garantito per l'utilizzo nell'ambiente bagno. Il tipo di verniciatura fa in modo che non tema l'umidità, rendendo possibile la fugatura con normali stucchi ceramici epossidici. Dopo la posa in opera e la stuccatura, pulire il prima possibile con acqua avendo cura di asportare ogni residuo di stucco.  
\* Decorative tile made in treated wood, guaranteed also for use in the bathroom. This kind of varnish protects from humidity, therefore it's possible filling with standard epossidic filler for ceramics. After placing and filling, please clean whitth water as soon as possible, carefully removing every mark left by the filler.





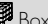




## PEZZI SPECIALI / SPECIAL TRIMS

		PEARL	DUNE	SILVER	DARK	MUD	RUST
	BATTISCOPA rett. 6,5x60 PZ 7,90  10	<b>I9R01051</b>	<b>I9R01101</b>	<b>I9R01151</b>	<b>I9R01201</b>	<b>I9R01251</b>	<b>I9R01301</b>
	GRADONE TOP rett. 32x120x4,5x2 PZ 172,90  1	<b>I9R34051</b>	<b>I9R34101</b>	<b>I9R34151</b>	<b>I9R34201</b>	<b>I9R34251</b>	<b>I9R34301</b>







## IMBALLI / PACKAGING

FORMATI SIZES	Formato Reale Real Size	 Thickness	 Pcs/Box	 Mq/Box	 Kg/Box	 Box/Pallet	 Mq/Pallet	 Kg/Pallet
60x120 / 24"x48" rett.	59,6x119,4	9	2	1,44	27,20	26	37,44	748
60x120 mix sizes	59,6x119,4	9	2	1,44	27,20	26	37,44	748
30x120 / 12"x48" rett.	29,7x119,4	9	4	1,44	27,20	36	51,84	1.020
60x60 / 24"x24" rett.	59,6x59,6	9	3	1,08	21,20	40	43,20	868
30x60 / 12"x24" rett.	29,7x59,6	9	6	1,08	21,20	40	43,20	868

L'unità minima di vendita per tutti gli articoli (fondi, decori e pezzi speciali) è la scatola completa. / The minimum sales quantity for all items (plain tiles, decorations and special trims) is one full box.  
Pezzi speciali e decori per effetto delle lavorazioni, possono presentare variazioni di tonalità. / Due to working process special trims and decors, may show variation in tonality.

## CARATTERISTICHE TECNICHE / TECHNICAL FEATURES

CLASSIFICAZIONE SECONDO NORME UNI EN 14411 (ISO 13006) ALLEGATO G-Gruppo B  
CLASSIFICATION IN ACCORDANCE WITH UNI EN 14411 (ISO 13006) ANNEX G-Group B

GRES PORCELLANATO A MASSA COLORATA FULL BODY COLORED PORCELAIN STONEWARE	NORMA NORM	VALORE PRESCRITTO DALLE NORME VALUE PRESCRIBED FROM THE NORMS	VALORE ABK ABK VALUE Interno 9 naturale	VALORE ABK ABK VALUE Interno 9 lappato	
RESISTENZA AL GELO FROST RESISTANCE	UNI EN ISO 10545/12	RICHIESTA REQUIRED	INGELIVO FROST PROOF	INGELIVO FROST PROOF	
COEFFICIENTE D'ATTRITO DINAMICO DYNAMIC FRICTION COEFFICIENT	B.C.R.A. C.A.	$\mu < 0,19$ SCIVOLOSITÀ PERICOLOSA - DANGEROUSLY SLIPPERY $0,20 < \mu < 0,39$ SCIVOLOSITÀ ECCESSIVA - EXCESSIVELY SLIPPERY $0,40 < \mu < 0,74$ ATTRITO SODDISFACENTE - SATISFACTORY GRIP $\mu > 0,75$ ATTRITO ECCELLENTE - EXCELLENT GRIP	> 0,40	-	
	B.C.R.A. G.B.		> 0,40	-	
COEFFICIENTE D'ATTRITO STATICO COEFFICIENT OF STATIC FRICTION	ASTM C 1028 (S.C.O.F.)	SLIP RESISTANT (> 0,60)	> 0,60 DRY	-	
			> 0,60 WET	-	
CLASSIFICAZIONE ANTISDRUCCIOLO NON-SLIP CLASSIFICATION	DIN 51130	IN FUNZIONE DELL'AMBIENTE O DELLA ZONA DI LAVORO BASING ON THE ENVIRONMENT OR THE WORKING AREA	R10	-	
RESISTENZA ALLO SCIVOLAMENTO SLIP RESISTANCE	DIN 51097	-	A	-	
VARIAZIONE CROMATICA SHADE VARIATION	V3	 aspetto uniforme uniform appearance V1	 lieve variazione slight variation V2	 moderata variazione moderate variation V3	 forte variazione substantial variation V4



LA GARANZIA DI UN FUTURO GREEN BUILDING PASSA ATTRAVERSO LA QUALITÀ ECO-SOSTENIBILE.

Da azienda sensibile alle tematiche ambientali, ABK si è sempre preoccupata di mantenere i parametri che regolano i processi industriali al di sotto delle normative, composto al 40% minimo da materiale riciclato recuperato da altre lavorazioni industriali. ECO-BODY è ufficialmente certificato per recepire gli standard LEED (Leadership in Energy and Environmental Design) il sistema di rating internazionale delle performance ambientali che in edilizia promuove la progettazione sostenibile riguardante l'intero edificio per ridurre l'impatto ambientale per tutto il suo ciclo di vita. Tutte le collezioni ABK che utilizzano questo speciale impasto certificato, riportano nella pagina riepilogativa l'esclusivo logo ECO-BODY, che oltre ad indicare il 40% minimo di materiale riciclato, ne evidenziano la compatibilità col sistema di crediti LEED.

ABK è membro di GREEN BUILDING COUNCIL ITALIA, l'associazione italiana dei leader che operano per trasformare il mercato dell'edilizia verso la sostenibilità ambientale e per costruire comunità vivibili. I soci GBC Italia promuovono la responsabilità ambientale, economica e sociale innovando il modo in cui gli edifici sono progettati, realizzati e utilizzati.

THE FUTURE OF GREEN BUILDING IS GUARANTEED BY ECO-SUSTAINABLE QUALITY.

As a company that cares deeply about environmental issues, ABK has always endeavoured to keep its parameters below the legal limits for manufacturing processes, utilising a minimum of 40% recycled material recovered from other industrial processes. ECO-BODY is officially certified for access to LEED (Leadership in Energy and Environmental Design) credits, the international rating system for environmental performance which promotes sustainable design in the construction industry with a view to reducing the overall environmental impact of buildings over their entire life cycle.

All ABK collections made with this special certified mix are identified in the contents page with the exclusive ECO-BODY logo, which in addition to indicating a minimum of 40% recycled material, underlines the product's compatibility with the LEED credits system. ABK is a member of Italian GREEN BUILDING COUNCIL, the association of top players working to transform the building market towards sustainability and to build liveable communities. GBC Italian members promote environmental, economic and social responsibility, innovating buildings in terms of engineering, design, manufacturing and use.

The system is based on credits awarded for each of the sustainability requirements met by the building. The sum of the credits determines the level of certification obtained. Although LEED certification is awarded to buildings and not single products, ceramic tile products contribute to the achievement of LEED credits.

La riproduzione dei colori è approssimativa.  
Colour reproduction approximate.

ABK Group Industrie Ceramiche s.p.a.  
via S.Lorenzo N.24/a - 41034 Finale Emilia - Modena Italy  
tel. 0535 761311 - fax 0535 761320/92800/761351



INTERNO 9



[www.abk.it](http://www.abk.it)

