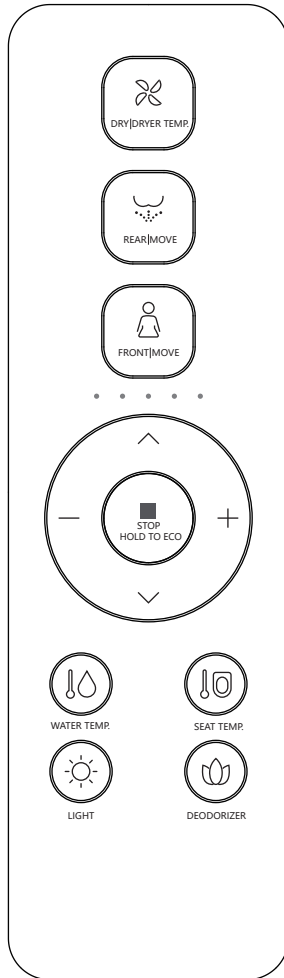


ARUVO



EUPHORIA INTELLIGENT TOILET SEAT

Remote Control Instructions

Thank you for choosing our product. Please read the instructions carefully before installation and keep it available for future maintenance or reference.

Content

Installation preparation

01. Remote control installation	01
02. Battery installation	01

Usage instruction

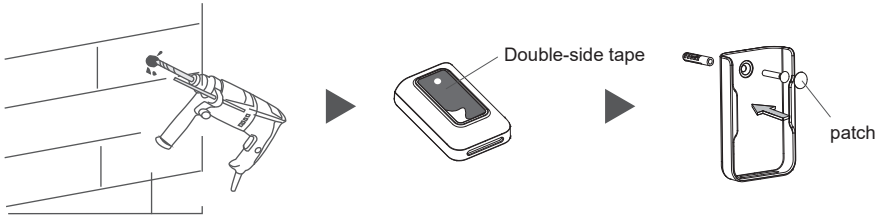
01. Remote control illustration	02
02. Rear/Front washing	03
03. Drying/Dryer temperature	04
04. Water volume adjustment	04
05. Nozzle position adjustment	04
06. Energy saving	04
07. Water temperature adjustment	05
08. Seat temperature adjustment	05
09. Night light	05
10. Auto deodorization	05
11. User code	06
12. Other operations	06

Installation Preparation

Remote control installation

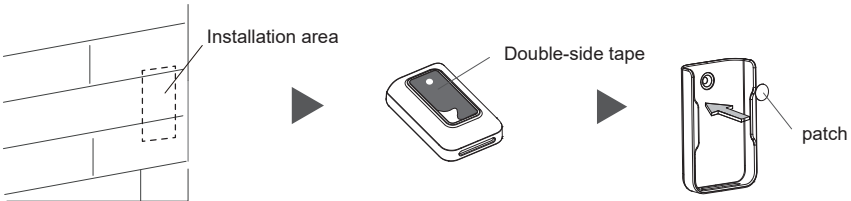
Remote control holder installation 1:

1. Drill a 6 mm diameter hole in the wall to a depth of about 35 mm.
2. Remove the double-sided adhesive tape on the back of the holder.
3. Install an anchor into the hole, stick the holder to the wall and secure with screws and then stick the patch with tape.



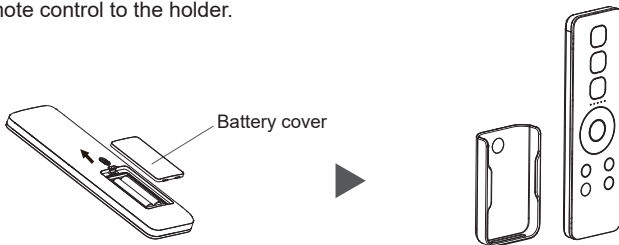
Remote control holder installation 2:

1. Clean and dry the pre-installation area of the holder.
2. Remove the double-sided adhesive tape on the back of the holder.
3. Stick the holder to the wall vertically and then stick the patch with tape.



Battery installation:

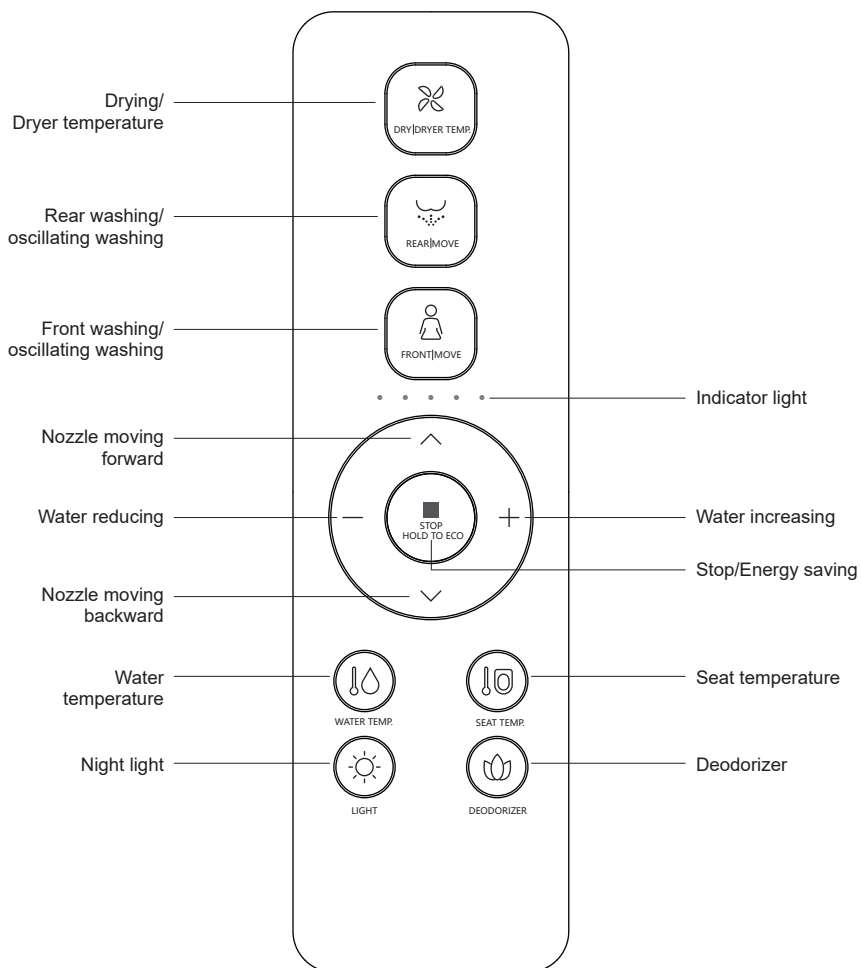
1. Insert batteries into the remote control.
2. Put the remote control to the holder.



- Notice:**
1. Please ensure the remote control is within reach when a person on the seat.
 2. Do not install and use the product in damp places such as a shower room.
 3. Do not place the product in a place where it is easily exposed to water.

Installation Preparation

Remote control illustration




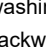
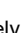
Usage Instruction

Notice :

- Only when the user is seated and the buzzer beeps can the functions of front/rear washing and drying be activated.
- Please sit backward on the seat for correct washing position and to avoid splashing.
- The nozzle will continue to spray for 1-2 seconds after user stands up during washing, so please press "STOP" button before standing up.


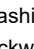
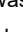
REAR|MOVE





· Press "  " button, the indicator light is on showing current water temperature level, it starts rear washing; Press again "  " button to shift to oscillating washing (nozzle moves forward and backward to expand washing area). The washing will stop automatically after one cycle, while it will stop immediately if the user presses "  " button.

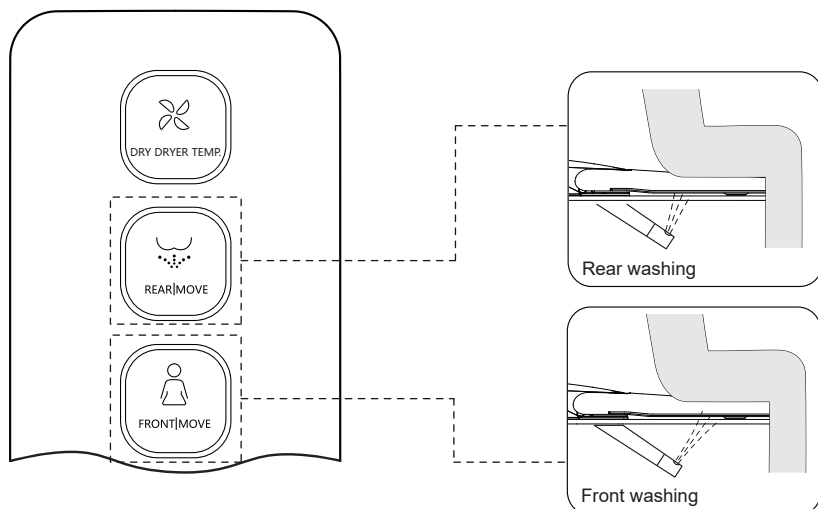
FRONT|MOVE



· Press "  " button, the indicator light is on showing current water temperature level, it starts front washing; Press again "  " button to shift to oscillating washing (nozzle moves forward and backward to expand washing area). The washing will stop automatically after one cycle, while it will stop immediately if the user presses "  " button.

Pulse cleaning function (Only for the product with pulse cleaning function.)

· During front/rear washing, long press "  " or "  " button to turn on/off pulse cleaning mode.



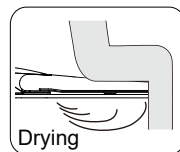
Usage Instruction

DRY|DRYER TEMP (Only for the product with drying function)



① Press "🌸" button, the indicator is on, showing the current air temperature level. It will stop drying automatically after one cycle or after leaving.

② Under drying, press "🌸" button to adjust the air temperature between 0-5 level, and the indicator light is on showing the air temperature level. When the indicator light is off, the temperature is at level 0 (room temperature).



○ ○ ○ ○ ○ ● ○ ○ ○ ○ ● ● ○ ○ ○ ● ● ● ○ ○ ● ● ● ● ○ ● ● ● ● ●

Room Level 1 Level 2 Level 3 Level 4 Level 5

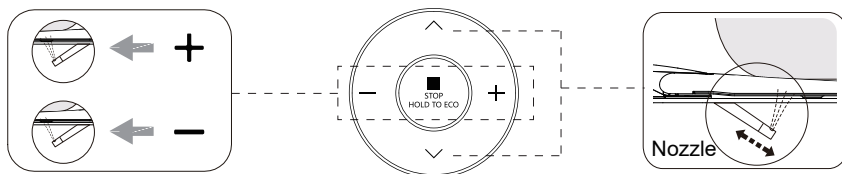
temperature

Water volume adjustment

- Press "+" or "-" button when it is under function of rear washing or front washing, the indicator light is on showing current water volume level, and water volume can be adjusted.

Nozzle position adjustment

- Press "^" or "v" button when it is under function of rear washing or front washing, the indicator light is on showing current nozzle position, and nozzle position can be adjusted in 5 levels.



Energy saving



Long press "■" button to enter energy saving mode, long press "■" button again to exit energy saving mode.

Under energy saving mode, seat temperature is set to Level 1 for energy saving.
(Note: If the seat temperature before energy saving is neutral, then it will be neutral as well.)

Remark

Energy saving mode will be suspended and the product will enter functional mode if the seat is used. The seat starts to heat immediately (without turning off the seat temperature), and the energy saving mode is restored once the seat is no longer being used.

Usage Instruction

Water temperature adjustment



Short press "🌡️" button to adjust the water temperature between 0-5 level. The indicator light is on showing current water temperature level. When the indicator is off, the temperature is at level 0 (room temperature).

○ ○ ○ ○ ○ ● ○ ○ ○ ○ ● ● ○ ○ ○ ● ● ● ○ ○ ● ● ● ● ○ ● ● ● ● ●
Room Level 1 Level 2 Level 3 Level 4 Level 5
temperature

Seat temperature adjustment



Short press "🪑" button to adjust the seat temperature between 0-5 level. The indicator light is on showing current seat temperature level. When the indicator is off, the temperature is at level 0 (room temperature).

○ ○ ○ ○ ○ ● ○ ○ ○ ○ ● ● ○ ○ ○ ● ● ● ○ ○ ● ● ● ● ○ ● ● ● ● ●
Room Level 1 Level 2 Level 3 Level 4 Level 5
temperature

Night light



- Night light adjustment: Short press "☀️" button to turn on/turn off night light.
- Intelligent mode: Long press "☀️" button to enter into intelligent mode (Night light will be on or off depending on the surrounding light.). If the product is on intelligent mode, short press "☀️" button to exit intelligent mode. (Factory setting: intelligent mode)

Auto deodorization



Short press "🪷" button to turn on/off auto deodorization function.
The deodorization function will be automatically turned on when the user is seated, and will stop after leaving. Under drying, deodorization will stop. (This function is turned on by default.)

Usage Instruction

User code

· Radio frequency remote control

- ① Shut off the power supply of toilet
- ② Press and hold "■" button, then press "☼" button, the indicator light will flash.
- ③ Re-connect the power plug and press "reset" button.
- ④ The indicator stops flashing and stays on for 2 seconds, indicating that the remote control and the toilet are matched successfully. It beeps once when the self-inspection completes. Then the remote control is ready for use.

· IR remote control

- ① Power on the toilet and the self-inspection starts. It beeps once when the self-inspection completes.
- ② Press and hold "■" button, then press "☼" button, the indicator light will flash.
- ③ Press the Pressure "+" or "-" button to select user 1-9 (as shown below). The indicator light displays the corresponding user code and flashes.
- ④ Press "■" button, then press "☼" button. The main unit beeps once, indicating that the remote control and the toilet are matched successfully.

○ ○ ○ ○ ○ User 1	○ ● ○ ○ ○ User 2	○ ○ ● ○ ○ User 3	○ ○ ○ ● ○ User 4	○ ○ ○ ○ ● User 5	● ● ○ ○ ○ User 6
○ ● ● ○ ○ User 7	○ ○ ● ● ○ User 8	○ ○ ○ ● ● User 9			

Other operations

Quite mode

· Press and hold the "■" button and press the "👤" button to turn on/off quite mode.

Sterilization function

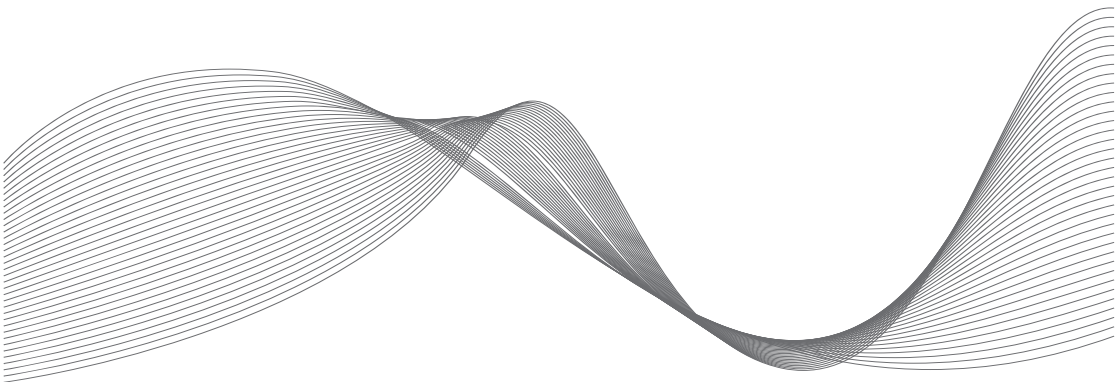
· When no one seated and washing/drying is off, long press "☼" button to turn on plasma sterilization function. This function will stop automatically after 2 hours. Under this mode, if any other button is pressed or user is seated, it will stop automatically. (Only for the product with sterilization function.)

APP code matching

· Press and hold "🚿" and "🚿" button simultaneously for longer than 3 seconds to start APP code matching. (Only for the product with APP)

Remark:

- The buzzer will "BEEP" once when the user presses one button indicating that the main unit receives the signal and conduct the operation accordingly. If the buzzer doesn't sound, it means the main unit doesn't receive the signal, please adjust the remote control direction and repress the button.
- In case of power cut during nozzle spraying, the wand cannot be retracted, please wait until the power is restored. In case of a power cut for a long period, please push the wand softly back by hand. Do not push hard, to avoid damage to wand and electrical machine.



The picture of product may not entirely consistent with actual appearance and color because of product improvements, please in kind prevail.